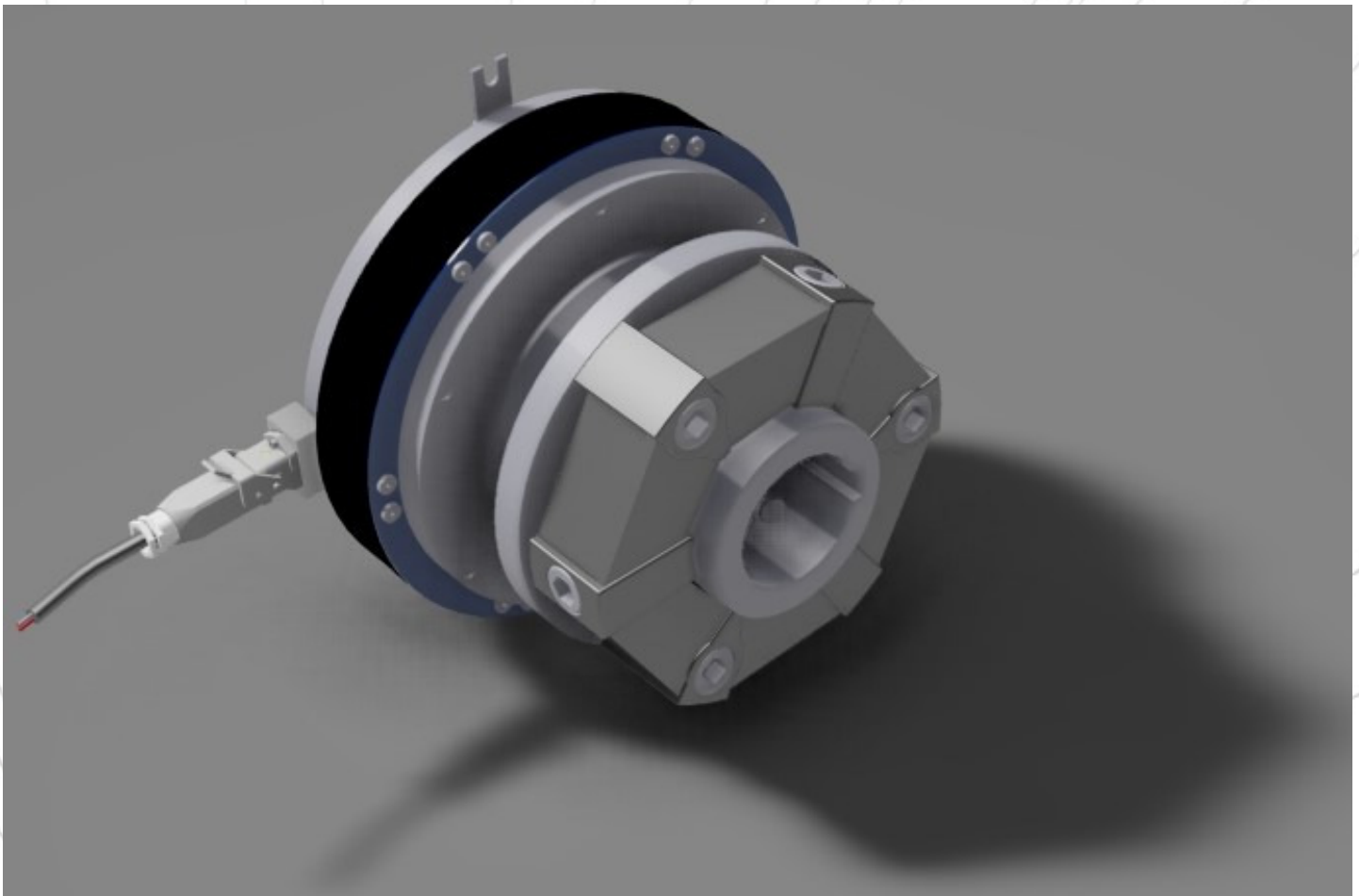


05 SEPTEMBER 2016

MWM FRENI FRIZIONI srl continues product range expansion introducing the 4 pole-face (double flux) electromagnetic clutches across all applications.

*The picture shows the EMSG310DF clutch for power take-off on loading and unloading fire pump  
In doing so, the pump can be operated while the fire truck is in motion!*



### EMSG310DF – Electromagnetic Four Pole Face Clutch (double flux)

Torque		R.P.M. max <i>Giri/' max</i>	Power <i>Potenza</i>	Voltage <i>Tensione</i>	Weight <i>Peso</i>
Static <i>Momento S</i>	Dynamic <i>Momento i</i>				
[Nm]	Nm	[min <sup>-1</sup> ].	[W]	[V DC]	[kg]
1.800	1.400	3.600	240	24	-

05 SEPTEMBER 2016

## MAIN APPLICATIONS

- INDUSTRIAL VEHICLES
- AGRICULTURAL EQUIPMENT
- MARINE INDUSTRY
- MINING INDUSTRY
- MECHANIC INDUSTRY

## FEATURES

The most important feature of this clutch is the double magnetic flux path in the armature, which enables the force of the magnetic field to be used twice.

This means, in theory, the torque would double in a same sized clutch.

- High torque security due to optimized magnetic circuit (up to **5.400 Nm**)
- Compact design and low moments of inertia
- Large permitted shaft diameter
- Backlash-free
- Maintenance free
- Long-life (due to large friction surfaces, smooth switching behavior, armature disc and rotor hardened for high wear resistance)
- For High speed application
- Low-noise operation
- Safe function up to wear limit
- Zero drag-torque
- Low magnetic leakage flux
- Electromagnetically operated for clean, simple actuation
- Different coil voltages available (standard 24V dc)
- Dry or wet operation (with slightly reduced torque transmission capacity)